

DC Motor

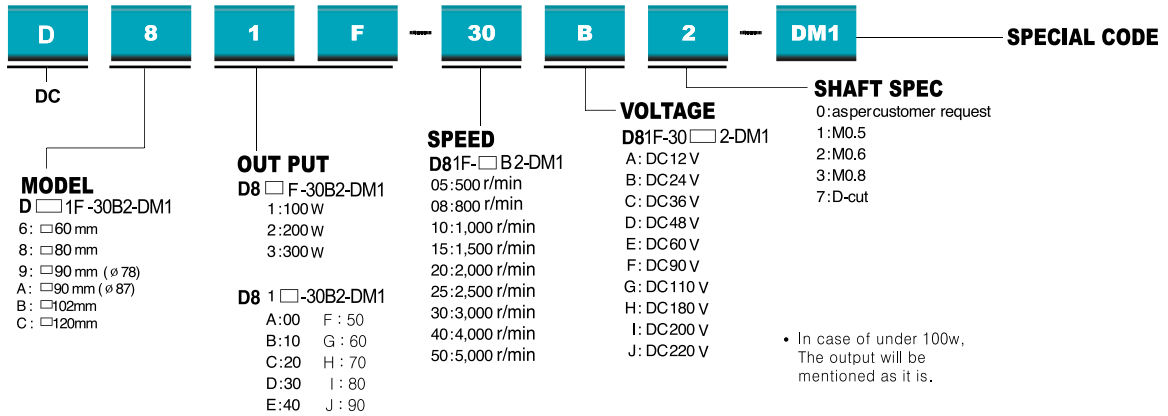


MODEL NO.

- 60mm-6W
D606-30A(12V) / D606-30B(24V)/ D606-30F(90V)
- 60mm-15W
D615-30A(12V) / D615-30B(24V)/ D615-30F(90V)
- 80mm-25W
D825-30A(12V) / D825-30B(24V)/ D825-30F(90V)
- 80mm-40W
D840-30A(12V) / D840-30B(24V)/ D840-30F(90V)
- 90mm-60W
D960-30A(12V) / D960-30B(24V)/ D960-30F(90V)
- 90mm-90W
D990-30A(12V) / D990-30B(24V)/ D990-30F(90V)
- 90mm-120W
D91C-30B(24V,Ø78) / D91C-30F(90V,Ø78) / DA1C-30A(12V,Ø87)
- 90mm-150W
D91F-30B(24V,Ø78) / D91F-30F(90V,Ø78) / DA1F-30A(12V,Ø87)
- 90mm-200W
DA2A-28A(12V,Ø87) / DA2A-30B(12V,Ø87) / DA2A-30F(90V,Ø87)
- 90mm-300W
DA3A-30B(24V,Ø87) / DA3A-30F(90V,Ø87)

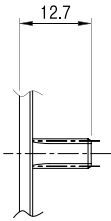
DC MOTOR Coding System

ex) 80mm, 150W, 3000rpm, 24V



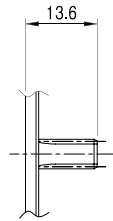
MOTOR OUTPUT SHAFT [TABLE2]

GEAR TYPE



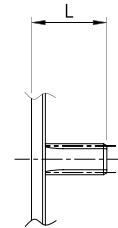
model: □ 60mm

GEAR TYPE



model: □ 80mm

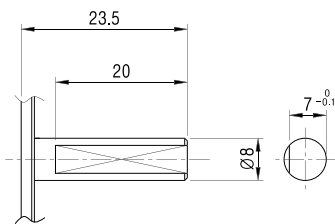
GEAR TYPE



| Power | L |
|----------|------|
| <90W | 18.5 |
| 100~200W | 20.5 |
| 300W | 23.8 |

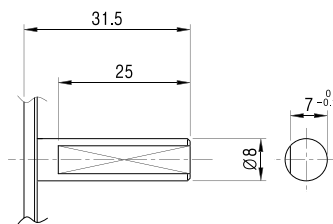
model: □ 90mm

D-CUT TYPE



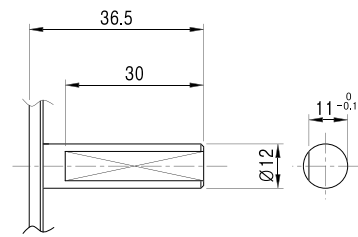
model: □ 60mm

D-CUT TYPE



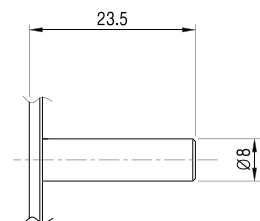
model: □ 80mm

D-CUT TYPE



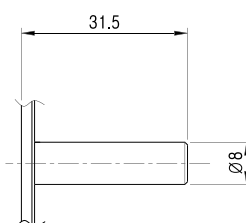
model: □ 90mm

STRAIGHT TYPE



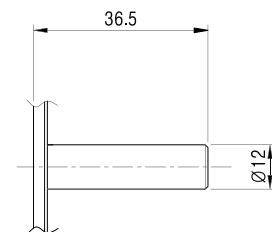
model: □ 60mm

STRAIGHT TYPE



model: □ 80mm

STRAIGHT TYPE



model: □ 90mm

□ 60mm sq(2.361in. sq)
D606-30A(12V) / D606-30B(24V)/ D606-30F(90V)

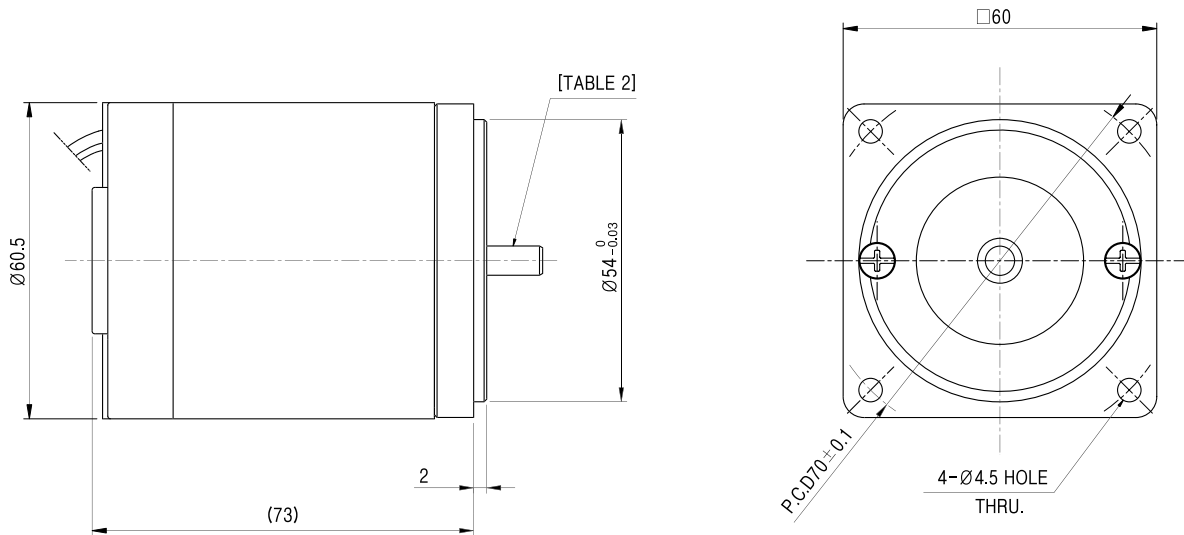


Standard Features

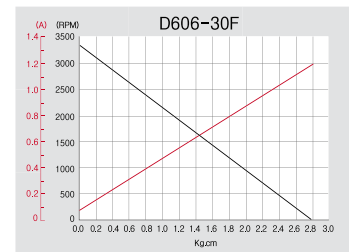
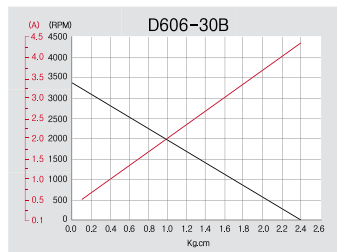
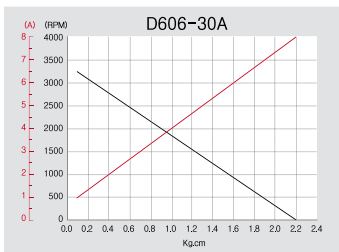
- Adjustable speed and high starting torque
- Replaceable brushes
- Different voltage and speed ratings available
- Models with accessory shaft for mounting a brake, encoder or double ended motor shaft
- Special making as per customer requirement is possible



Typical outline drawing



Performance curve



Specification

| MODEL NO. | Voltage (V) | No Load | | | Rated Load | | | Stall | |
|-----------|----------------|------------------|----------------|---------------|------------------|--------------------|----------------|--------------------|----------------|
| | | Speed (r/min) | current (A) | Output (W) | Speed (r/min) | torque (kgf-cm) | current (A) | torque (kgf-cm) | current (A) |
| | | D606-30A | 12 | 3400 | 0.8 | 6 | 3000 | 0.195 | 1.3 |
| D606-30B | 24 | 3350 | 0.45 | 6 | 3000 | 0.195 | 0.7 | 2.4 | 4.3 |
| D606-30F | 90 | 3300 | 0.04 | 6 | 3000 | 0.195 | 0.07 | 2.8 | 1.2 |

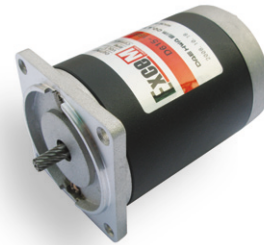
DC

□ 60mm sq(2.361in. sq)
 D615-30A(12V) / D615-30B(24V)/ D615-30F(90V)

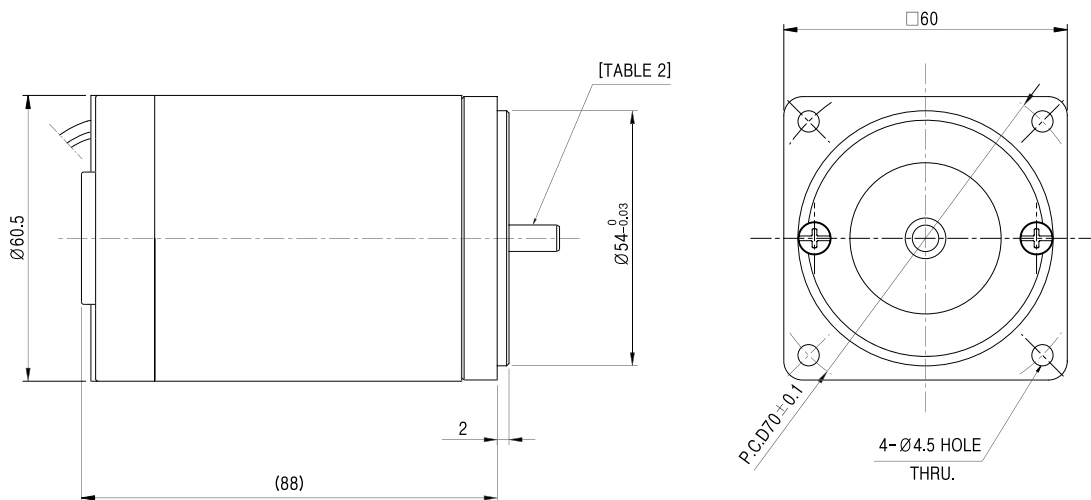


Standard Features

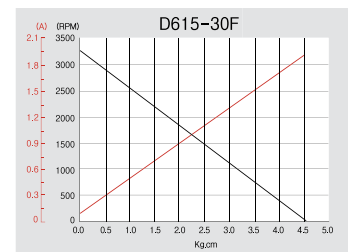
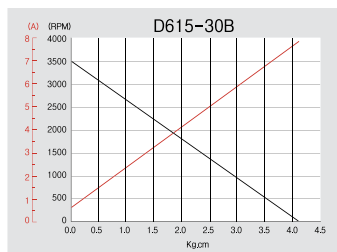
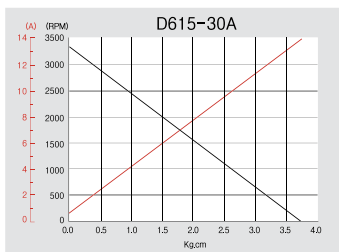
- Adjustable speed and high starting torque
- Replaceable brushes
- Different voltage and speed ratings available
- Models with accessory shaft for mounting a brake, encoder or double ended motor shaft
- Special making as per customer requirement is possible



Typical outline drawing



Performance curve



Specification

| MODEL NO. | Voltage (V) | No Load | | | Rated Load | | | Stall | |
|-----------|----------------|------------------|----------------|---------------|------------------|--------------------|----------------|--------------------|----------------|
| | | Speed (r/min) | current (A) | Output (W) | Speed (r/min) | torque (kgf-cm) | current (A) | torque (kgf-cm) | current (A) |
| D615-30A | 12 | 3250 | 0.6 | 15 | 3000 | 0.49 | 1.7 | 3.7 | 13.5 |
| D615-30B | 24 | 3500 | 0.4 | 15 | 3000 | 0.49 | 1.2 | 4.1 | 7.7 |
| D615-30F | 90 | 3200 | 0.06 | 15 | 2900 | 0.49 | 0.16 | 4.5 | 1.9 |

□ 80mm sq(3.15in.sq)

D825-30A(12V) / D825-30B(24V)/ D825-30F(90V)

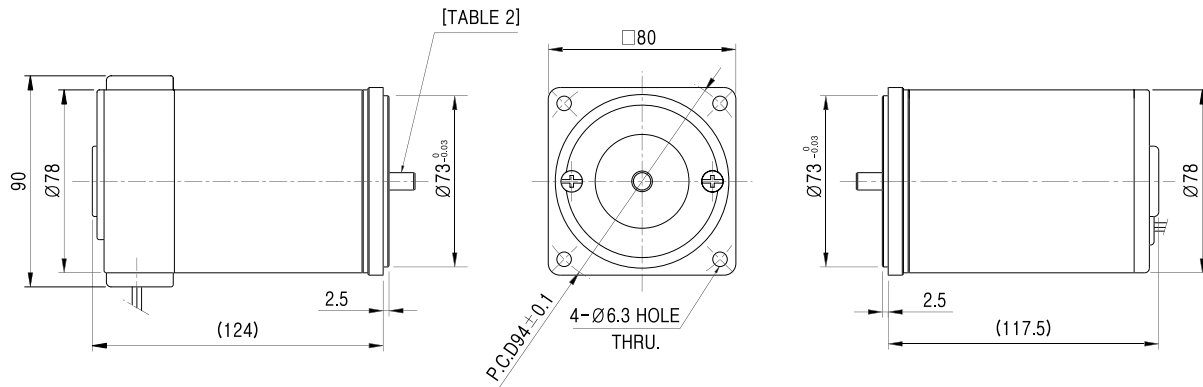


Standard Features

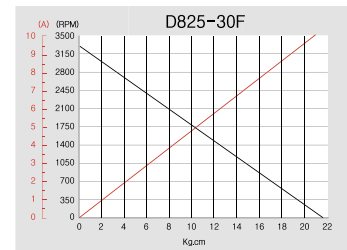
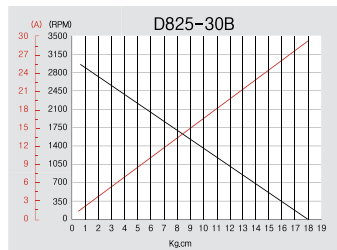
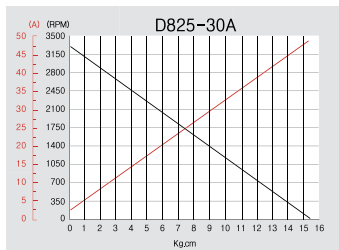
- Adjustable speed and high starting torque
- Replaceable brushes
- Different voltage and speed ratings available
- Models with accessory shaft for mounting a brake, encoder or double ended motor shaft
- Special making as per customer requirement is possible



Typical outline drawing



Performance curve



Specification

| MODEL NO. | Voltage (V) | No Load | | | Rated Load | | | Stall | |
|-----------|----------------|------------------|----------------|---------------|------------------|--------------------|----------------|--------------------|----------------|
| | | Speed (r/min) | current (A) | Output (W) | Speed (r/min) | Torque (kgf-cm) | Current (A) | Torque (kgf-cm) | Current (A) |
| D825-30A | 12 | 3300 | 1.8 | 25 | 3100 | 0.811 | 3.3 | 15.5 | 48 |
| D825-30B | 24 | 3050 | 0.8 | 25 | 2900 | 0.811 | 1.9 | 18 | 29 |
| D825-30F | 90 | 3200 | 0.04 | 25 | 3000 | 0.811 | 0.35 | 21.5 | 10 |

DC MOTOR

□ 80mm sq(3.15in.sq)

D840-30A(12V) / D840-30B(24V)/ D840-30F(90V)

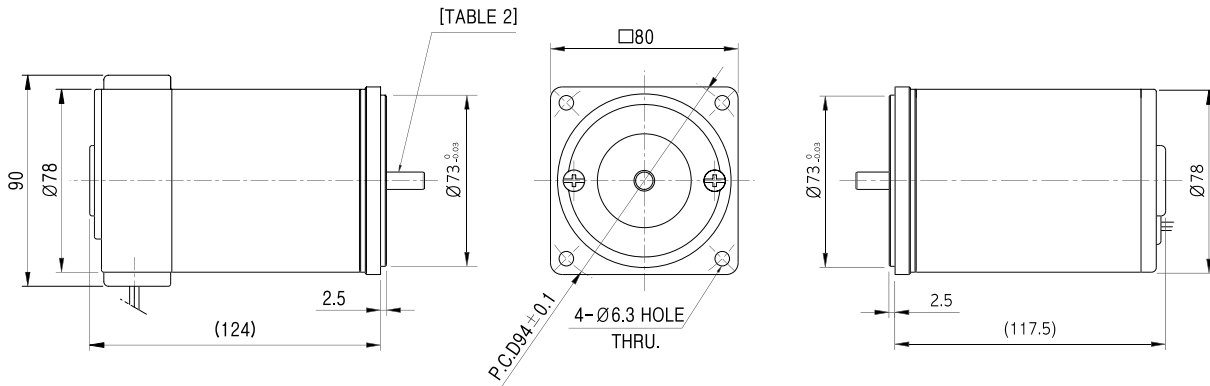


Standard Features

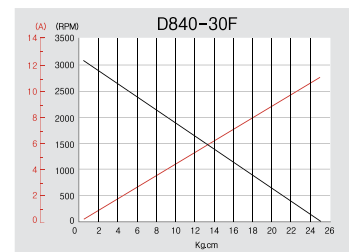
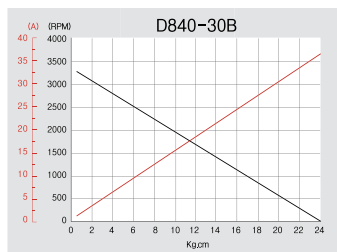
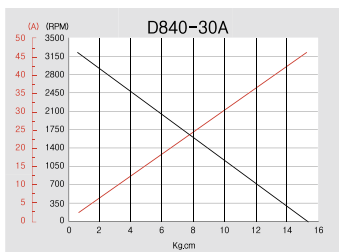
- Adjustable speed and high starting torque
- Replaceable brushes
- Different voltage and speed ratings available
- Models with accessory shaft for mounting a brake, encoder or double ended motor shaft
- Special making as per customer requirement is possible



Typical outline drawing



Performance curve



Specification

| MODEL NO. | Voltage (V) | No Load | | | Rated Load | | | Stall | |
|-----------|----------------|------------------|----------------|---------------|------------------|--------------------|----------------|--------------------|----------------|
| | | Speed (r/min) | Current (A) | Output (W) | Speed (r/min) | Torque (kgf-cm) | Current (A) | Torque (kgf-cm) | Current (A) |
| D840-30A | 12 | 3300 | 1.5 | 40 | 3000 | 1.3 | 4.8 | 15 | 47 |
| D840-30B | 24 | 3250 | 0.6 | 40 | 3000 | 1.3 | 1.9 | 23 | 37 |
| D840-30F | 90 | 3400 | 0.03 | 40 | 3000 | 1.3 | 0.6 | 24 | 1.5 |

□ 90mm sq(3.54in.sq)

D960-30A(12V) / D960-30B(24V)/ D960-30F(90V)

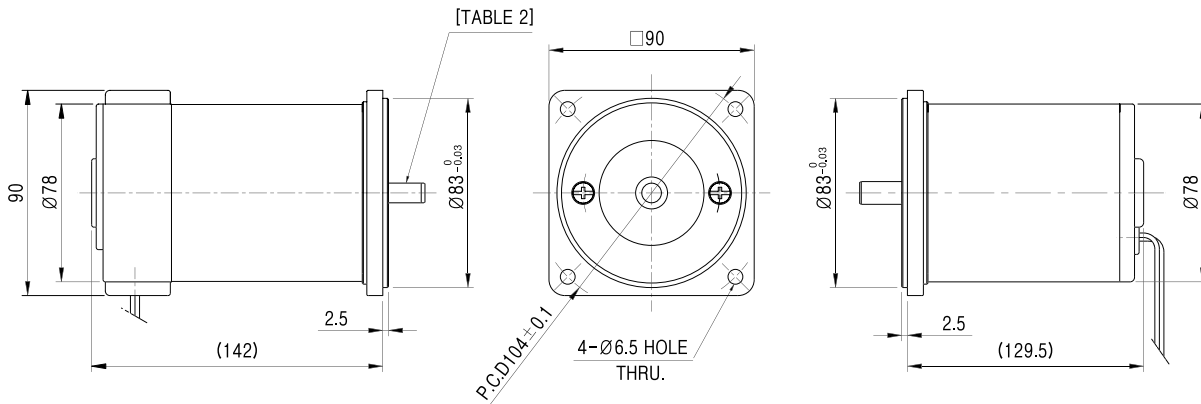


Standard Features

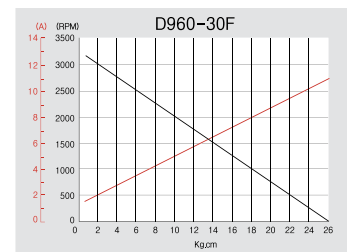
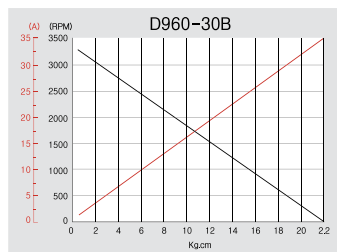
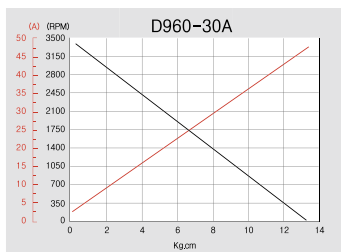
- Adjustable speed and high starting torque
- Replaceable brushes
- Different voltage and speed ratings available
- Models with accessory shaft for mounting a brake, encoder or double ended motor shaft
- Special making as per customer requirement is possible



Typical outline drawing



Performance curve



Specification

| MODEL NO. | Voltage (V) | No Load | | | Rated Load | | | Stall | |
|-----------|----------------|------------------|----------------|---------------|------------------|--------------------|----------------|--------------------|----------------|
| | | Speed (r/min) | Current (A) | Output (W) | Speed (r/min) | Torque (kgf-cm) | Current (A) | Torque (kgf-cm) | Current (A) |
| | | D960-30A | 12 | 3400 | 2 | 60 | 2900 | 1.95 | 8.5 |
| D960-30B | 24 | 3300 | 1.15 | 60 | 3000 | 1.95 | 4.3 | 19 | 36 |
| D960-30F | 90 | 3250 | 0.02 | 60 | 3000 | 1.95 | 0.8 | 25 | 11.5 |

□ 90mm sq(3.54in.sq)

D990-30A(12V) / D990-30B(24V)/ D990-30F(90V)

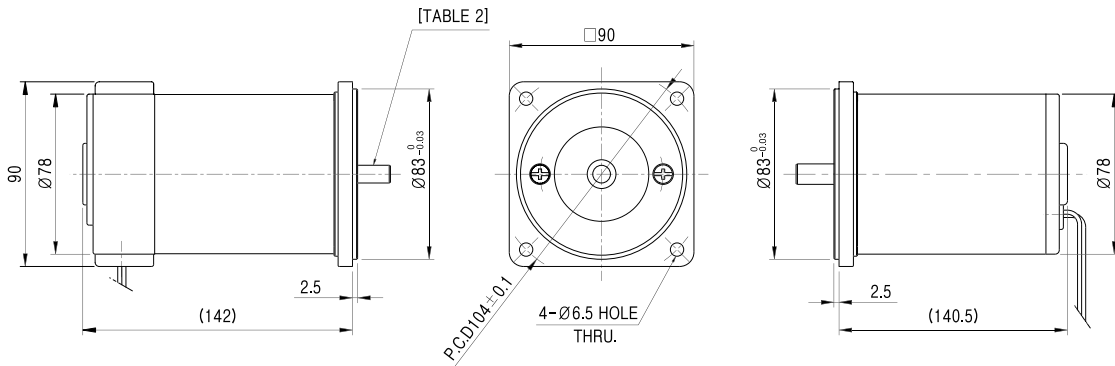


Standard Features

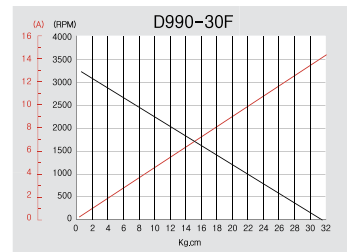
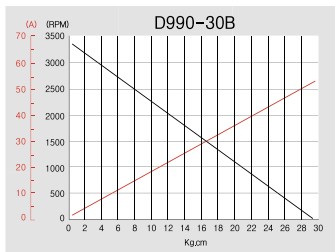
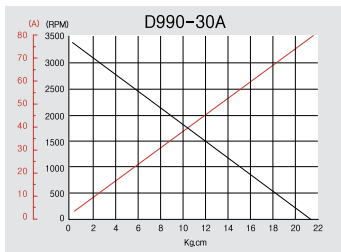
- Adjustable speed and high starting torque
- Replaceable brushes
- Different voltage and speed ratings available
- Models with accessory shaft for mounting a brake, encoder or double ended motor shaft
- Special making as per customer requirement is possible



Typical outline drawing



Performance curve



Specification

| MODEL NO. | Voltage (V) | No Load | | | Rated Load | | | Stall | |
|-----------|----------------|------------------|----------------|---------------|------------------|--------------------|----------------|--------------------|----------------|
| | | Speed (r/min) | Current (A) | Output (W) | Speed (r/min) | Torque (kgf-cm) | Current (A) | Torque (kgf-cm) | Current (A) |
| D990-30A | 12 | 3400 | 3.0 | 90 | 3000 | 2.92 | 12 | 21 | 80 |
| D990-30B | 24 | 3400 | 1.5 | 90 | 3000 | 2.92 | 6.2 | 29 | 55 |
| D990-30F | 90 | 3300 | 0.12 | 90 | 3000 | 2.92 | 1.2 | 31 | 15 |

□ 90mm sq(3.54in.sq)

D91C-30A(12V) / D91C-30B(24V) / D91C-30F(90V)

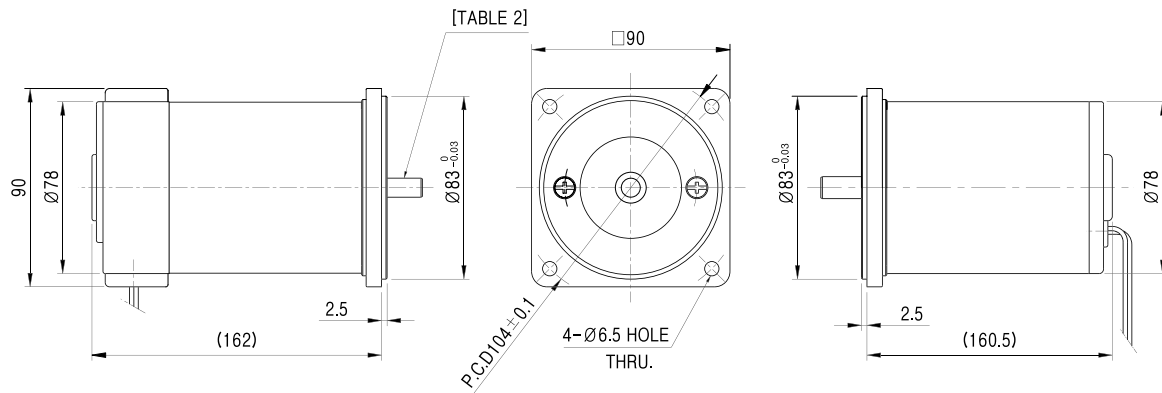


Standard Features

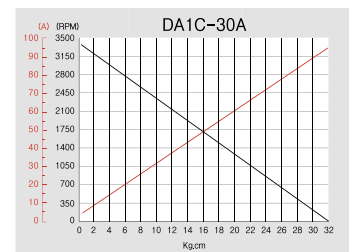
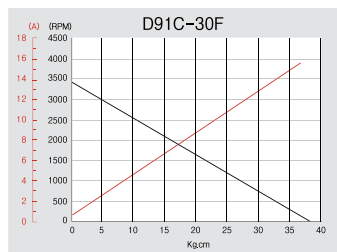
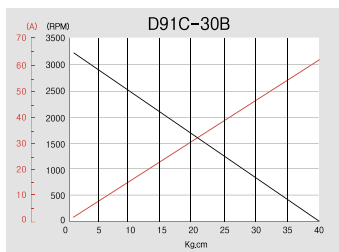
- Adjustable speed and high starting torque
- Replaceable brushes
- Different voltage and speed ratings available
- Models with accessory shaft for mounting a brake, encoder or double ended motor shaft
- Special making as per customer requirement is possible



Typical outline drawing



Performance curve



Specification

| MODEL NO. | Voltage (V) | No Load | | | Rated Load | | | Stall | |
|-----------|----------------|------------------|----------------|---------------|------------------|--------------------|----------------|--------------------|----------------|
| | | Speed (r/min) | Current (A) | Output (W) | Speed (r/min) | Torque (kgf-cm) | Current (A) | Torque (kgf-cm) | Current (A) |
| D91C-30A | 12 | 3400 | 4 | 120 | 3000 | 3.9 | 15 | 31 | 96 |
| D91C-30B | 24 | 3250 | 1.5 | 120 | 3000 | 3.9 | 6.8 | 39 | 64 |
| D91C-30F | 90 | 3400 | 0.3 | 120 | 3000 | 3.9 | 2 | 37 | 18 |

□ 90mm sq(3.54in.sq)
D91F-30B(24V) / D91F-30F(90V)

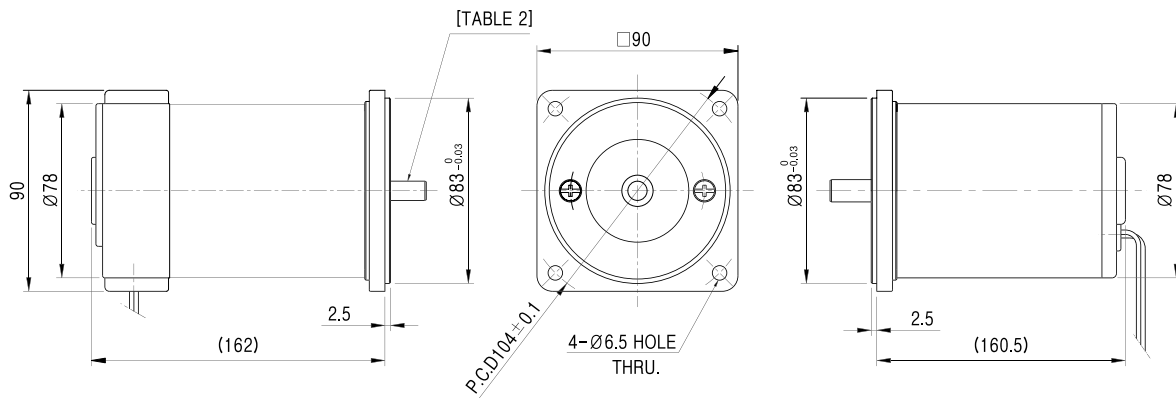


Standard Features

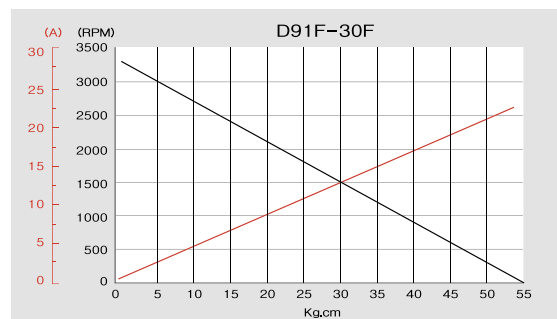
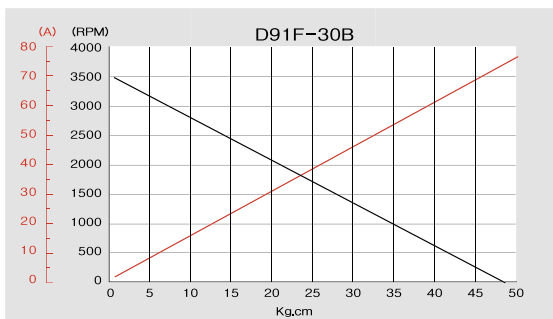
- Adjustable speed and high starting torque
- Replaceable brushes
- Different voltage and speed ratings available
- Models with accessory shaft for mounting a brake, encoder or double ended motor shaft
- Special making as per customer requirement is possible



Typical outline drawing



Performance curve



Specification

| MODEL NO. | Voltage (V) | No Load | | | Rated Load | | | Stall | |
|-----------|----------------|------------------|----------------|---------------|------------------|--------------------|----------------|--------------------|----------------|
| | | Speed (r/min) | Current (A) | Output (W) | Speed (r/min) | Torque (kgf-cm) | Current (A) | Torque (kgf-cm) | Current (A) |
| D91F-30B | 24 | 3400 | 1.8 | 150 | 3000 | 4.87 | 8 | 48 | 78 |
| D91F-30F | 90 | 3200 | 0.5 | 150 | 3000 | 4.87 | 2 | 52 | 23 |

□ 90mm sq(3.54in.sq)
DA1F-30A(12V)

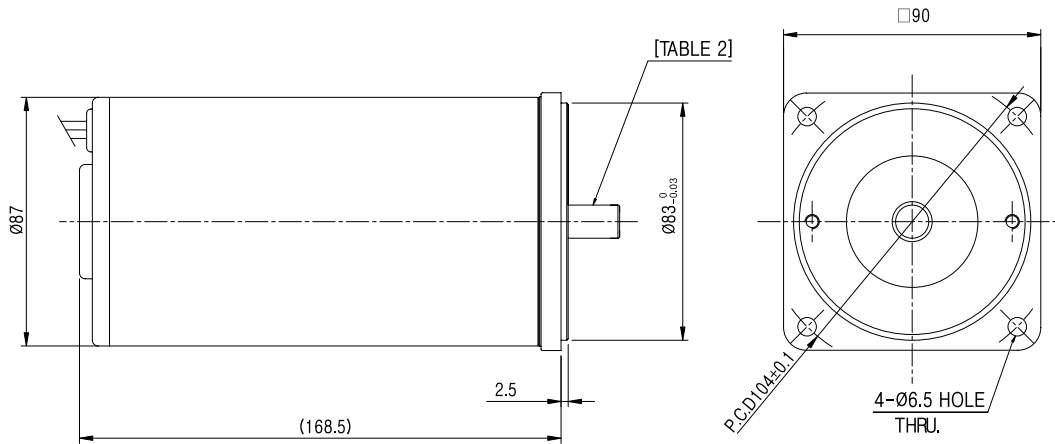


Standard Features

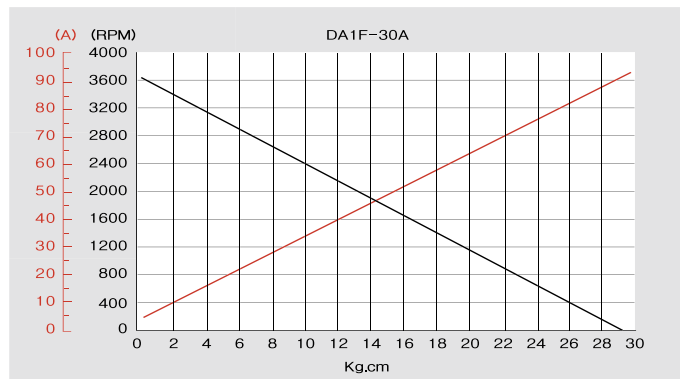
- Adjustable speed and high starting torque
- Replaceable brushes
- Different voltage and speed ratings available
- Models with accessory shaft for mounting a brake, encoder or double ended motor shaft
- Special making as per customer requirement is possible



Typical outline drawing



Performance curve



Specification

| MODEL NO. | Voltage (V) | No Load | | | Rated Load | | | Stall | |
|-----------|----------------|------------------|----------------|---------------|------------------|--------------------|----------------|--------------------|----------------|
| | | Speed (r/min) | Current (A) | Output (W) | Speed (r/min) | Torque (kgf-cm) | Current (A) | Torque (kgf-cm) | Current (A) |
| DA1F-30B | 12 | 3600 | 5 | 150 | 3000 | 4.87 | 19 | 28 | 95 |

DC

□ 90mm sq(3.54in.sq)
D92A-30F(90V)

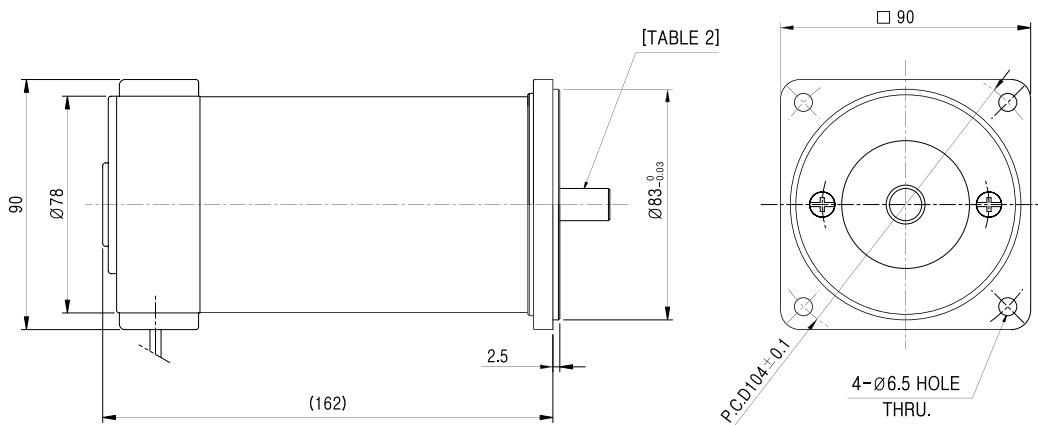


Standard Features

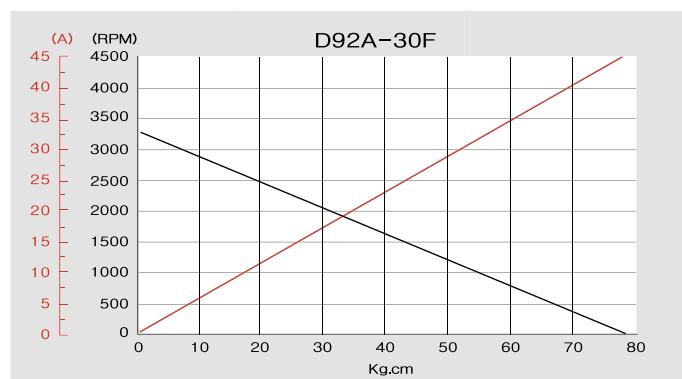
- Adjustable speed and high starting torque
- Replaceable brushes
- Different voltage and speed ratings available
- Models with accessory shaft for mounting a brake, encoder or double ended motor shaft
- Special making as per customer requirement is possible



Typical outline drawing



Performance curve



Specification

| MODEL NO. | Voltage (V) | No Load | | | Rated Load | | | Stall | |
|-----------|----------------|------------------|----------------|---------------|------------------|--------------------|----------------|--------------------|----------------|
| | | Speed (r/min) | Current (A) | Output (W) | Speed (r/min) | Torque (kgf-cm) | Current (A) | Torque (kgf-cm) | Current (A) |
| D92A-30F | 90 | 3300 | 0.4 | 200 | 3000 | 6.5 | 2.8 | 77 | 45 |

□ 90mm sq(3.54in.sq)
DA2A-28A(12V) / DA2A-30B(24V)

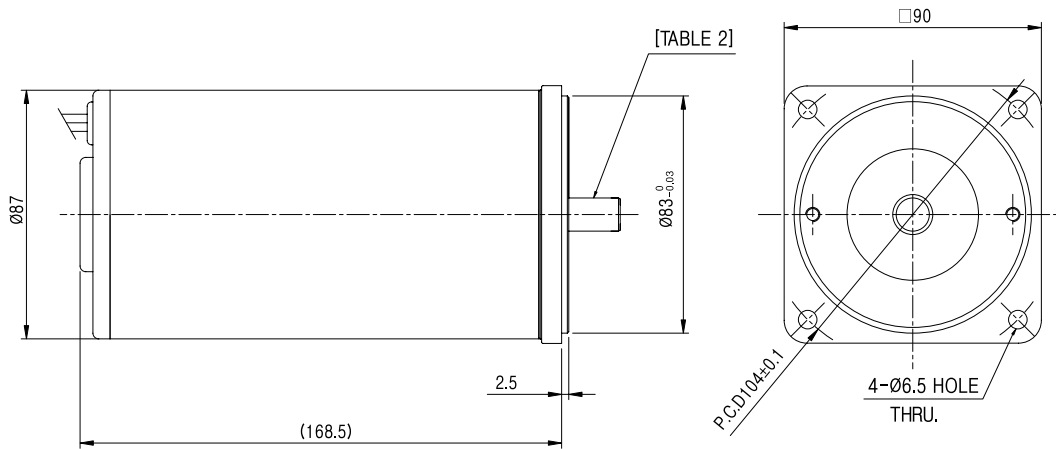


Standard Features

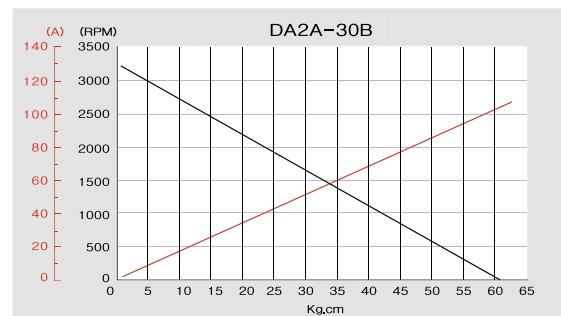
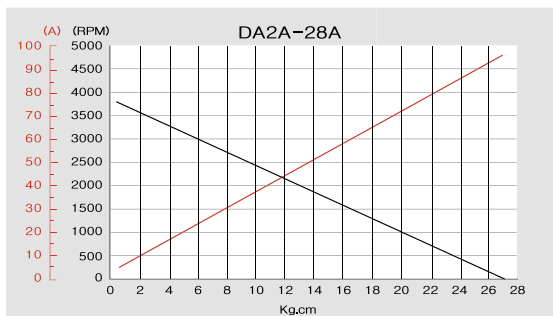
- Adjustable speed and high starting torque
- Replaceable brushes
- Different voltage and speed ratings available
- Models with accessory shaft for mounting a brake, encoder or double ended motor shaft
- Special making as per customer requirement is possible



Typical outline drawing



Performance curve



Specification

| MODEL NO. | Voltage (V) | No Load | | | Rated Load | | | Stall | |
|-----------|----------------|------------------|----------------|---------------|------------------|--------------------|----------------|--------------------|----------------|
| | | Speed (r/min) | Current (A) | Output (W) | Speed (r/min) | Torque (kgf-cm) | Current (A) | Torque (kgf-cm) | Current (A) |
| DA2A-28A | 12 | 3700 | 5 | 200 | 2800 | 6.95 | 28 | 26 | 98 |
| DA2A-30B | 24 | 3300 | 1.8 | 200 | 3000 | 6.5 | 12 | 61 | 110 |

DC

□ 90mm sq(3.54in.sq)
DA3A-30B(24V) / DA3A-30F(90V)

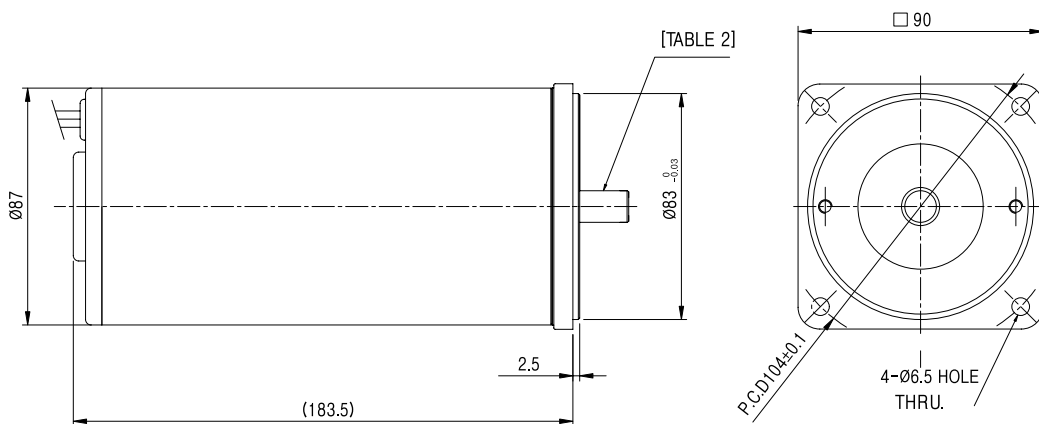


Standard Features

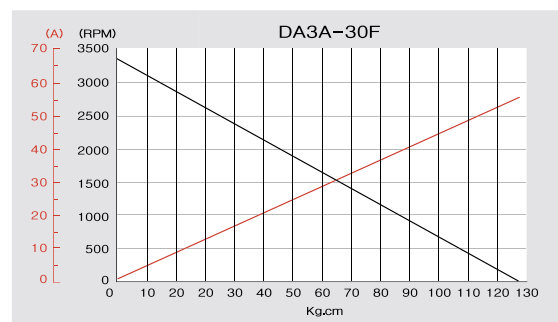
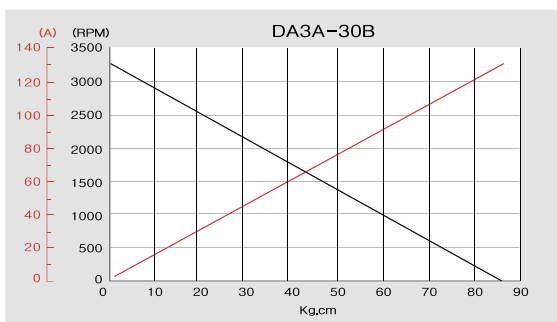
- Adjustable speed and high starting torque
- Replaceable brushes
- Different voltage and speed ratings available
- Models with accessory shaft for mounting a brake, encoder or double ended motor shaft
- Special making as per customer requirement is possible



Typical outline drawing



Performance curve



Specification

| MODEL NO. | Voltage (V) | No Load | | | Rated Load | | | Stall | |
|-----------|-------------|---------------|-------------|------------|---------------|-----------------|-------------|-----------------|-------------|
| | | Speed (r/min) | Current (A) | Output (W) | Speed (r/min) | Torque (kgf-cm) | Current (A) | Torque (kgf-cm) | Current (A) |
| DA3A-30B | 24 | 3300 | 1.8 | 300 | 3000 | 9.74 | 15.5 | 84 | 135 |
| DA3A-30F | 90 | 3300 | 0.5 | 300 | 3000 | 9.74 | 4 | 125 | 58 |